



AESTHETICS



BTL VANQUISH+ME™

BTL VANQUISH ME™

BENCHMARKS SET BENCHMARKS



sales@btlnet.com
www.btl.aesthetics.com

All rights reserved. Although every care has been taken to provide accurate and up-to-date information, no responsibility can be accepted for any mistakes or misprints contained in this catalogue. The products and their specifications, as shown in this catalogue, may differ according to the country where they are sold.

THE WORLD'S MOST **ADVANCED** **TECHNOLOGY**

BTL VANQUISH ME™ is the world's most advanced system for body shaping and circumferential reduction of abdomen and thighs.

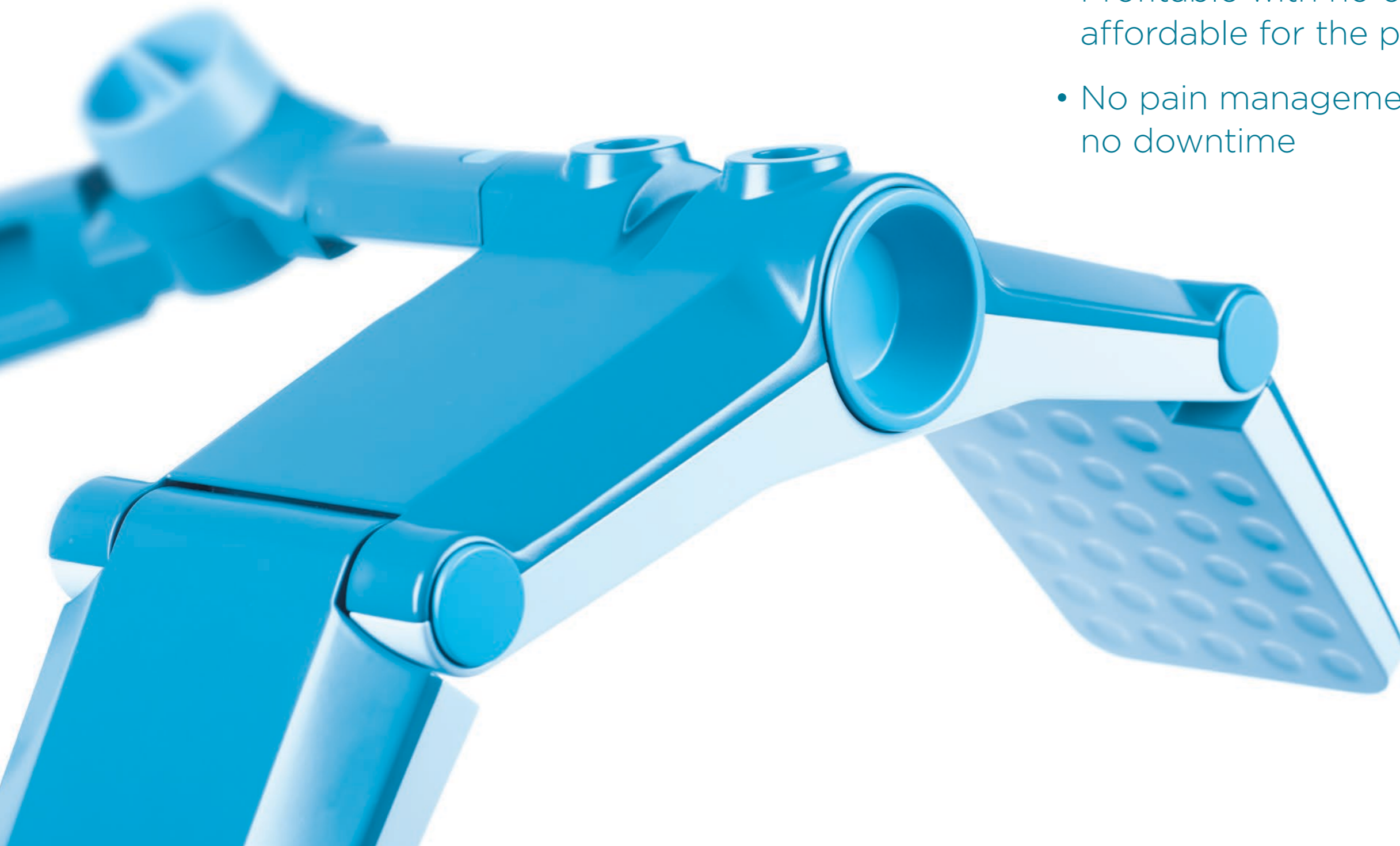
BTL VANQUISH ME™ represents the only operator independent Selective RF technology that allows to treat largest treatment area in a single session.



HOT IS THE NEW COOL

New US FDA cleared technology, which selectively delivers heat into adipose tissue and disrupts adipose cells, features the following benefits:

- The industry's largest spot size
- Operator independent procedure
- Profitable with no consumables; affordable for the patient
- No pain management required, no downtime



EVERYTHING ABOUT IT WHISPERS SAFETY

BTL VANQUISH ME™ system utilizes real-time impedance tuning circuitry. The embedded technology matches the characteristics of the RF generator with the adipose layer.

The groundbreaking design of energy delivery helps to target the thermal effect into the adipose tissue while protecting surrounding layers.

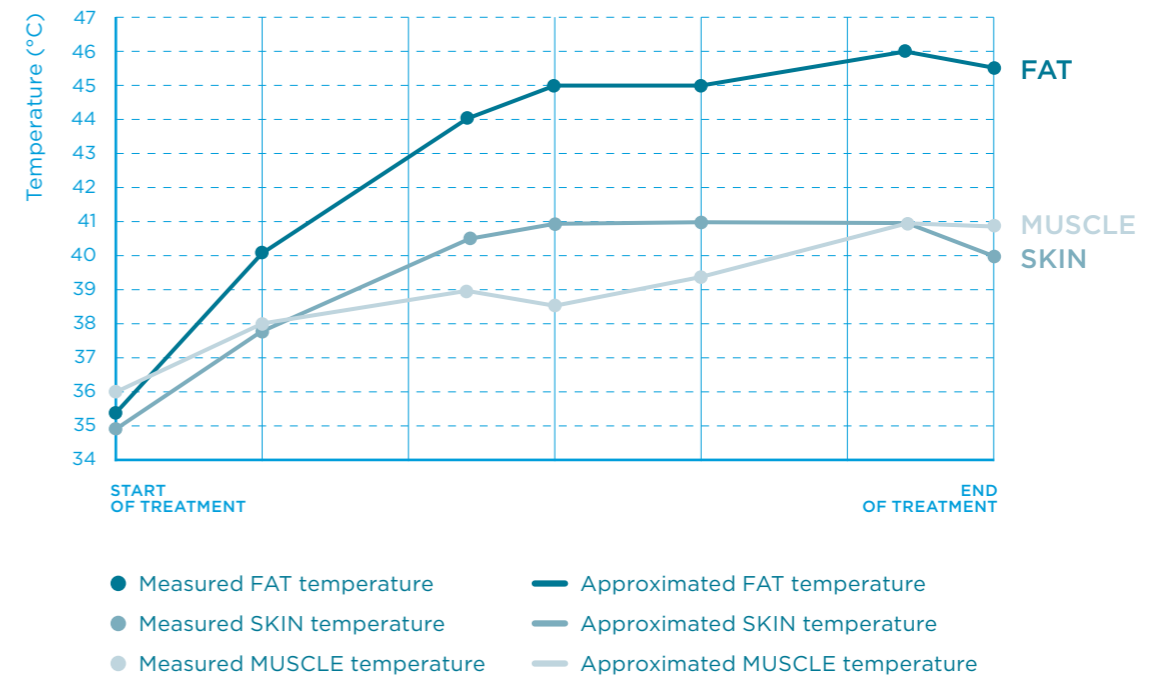


reddot award 2014
winner

SELECTIVELY TARGETS ADIPOSE TISSUE

The Selective RF field is precisely focused into adipose layers while the skin is automatically cooled by the air. Targeted fat remains at higher temperatures compared with overlying skin, providing superior level of comfort and safety.

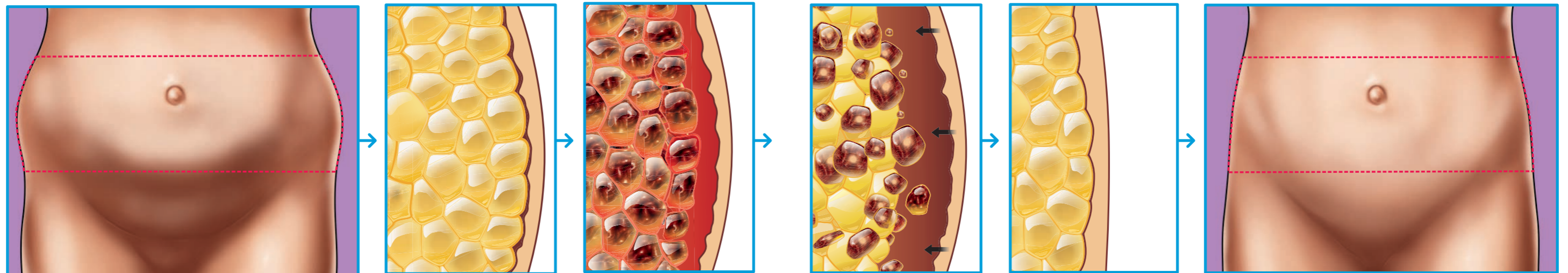
Evolution of temperature in time*



* Operator Independent Focused High Frequency ISM Band for Fat Reduction: Porcine Model, Robert Weiss, MD, FAAD, FACPh, Margaret Weiss, MD, FAAD, Karen Beasley, MD, FAAD, Jan Vrba, PhD and Jan Bernardy, PhD

HEAT DIFFERENT TREAT DIFFERENT

During the operator independent procedure, the adipose cells are being disrupted. Independent studies have demonstrated that exposure to BTL VANQUISH ME™ causes disruption of the fat cells and volumetric reduction in the fat layer.



BTL VANQUISH ME™ has been designed to target RF energy based on differing characteristics of body tissues. Frequencies employed are best matched with the impedance of adipose tissue.

Targeting specifically those tissues, the BTL VANQUISH ME™ deep tissue heating affects fat at selected depths.*

* Human Adipocyte Apoptosis Immediately Following High Frequency Focused Field Radio Frequency: Case Study David McDaniel MD¹ and Paula Lozanova MD²

¹ McDaniel Institute of Anti-Aging Research, Virginia Beach, VA

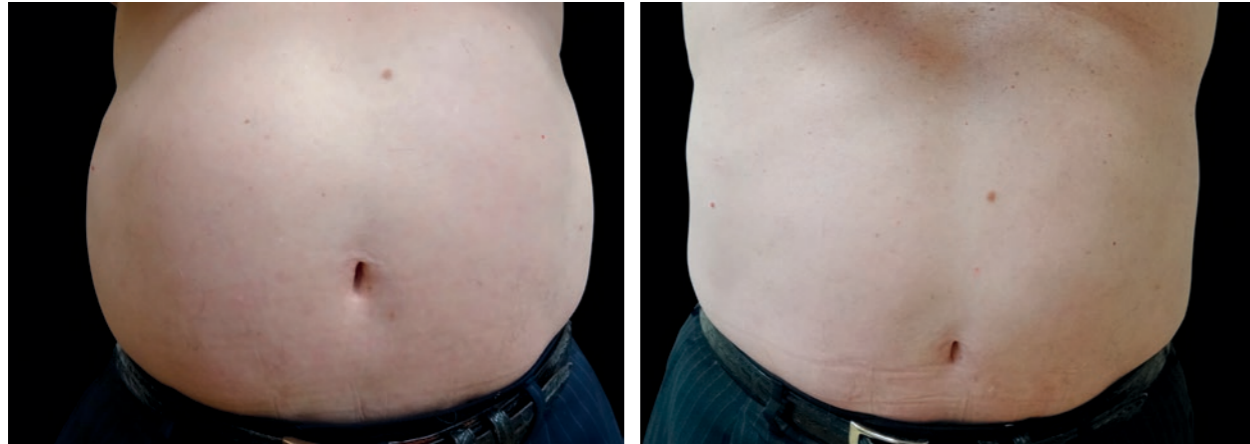
² Department of Dermatology and Venerology, Medical University, Sofia, Bulgaria



FAT REMOVAL
CIRCUMFERENTIAL REDUCTION
BODY SHAPING

LOOK DIFFERENT

Courtesy of: Grace Liu, MD



BEFORE

AFTER 4TX

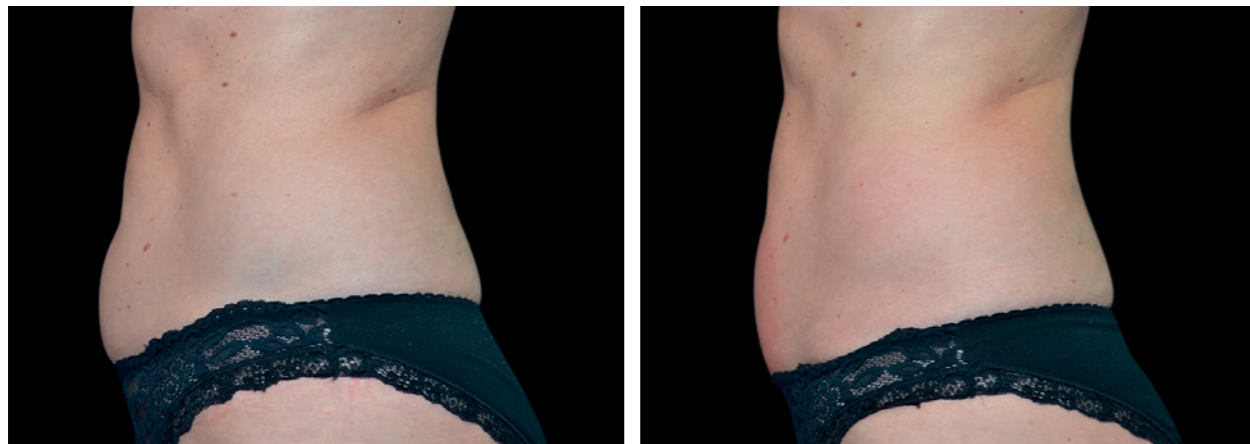
Courtesy of: Melanie Palm, MD



BEFORE

AFTER 4TX

Courtesy of: BTL Aesthetics



BEFORE

AFTER 2TX

FEEL DIFFERENT

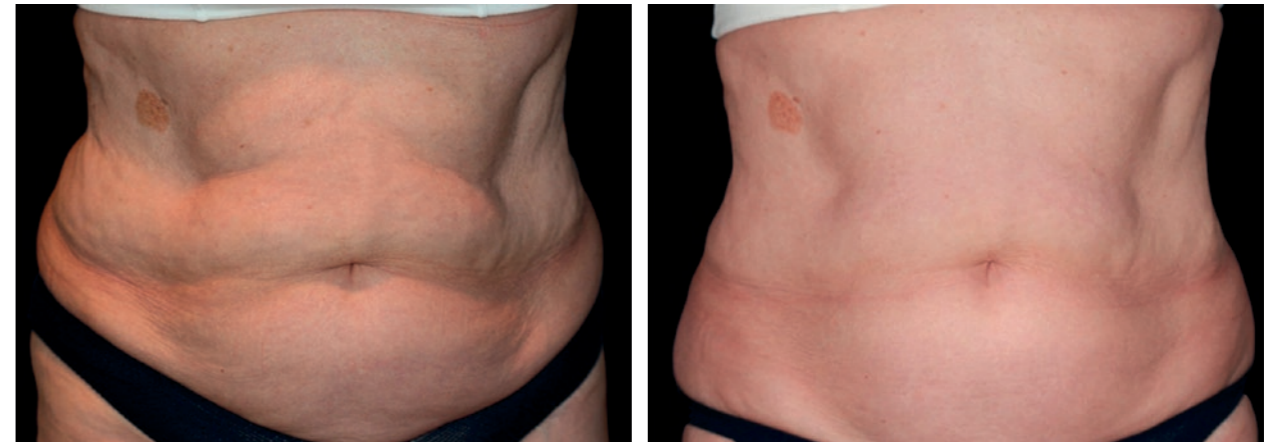
Courtesy of: David Goldberg, MD



BEFORE

AFTER 4TX

Courtesy of: Stephen Beals, MD



BEFORE

AFTER 4TX

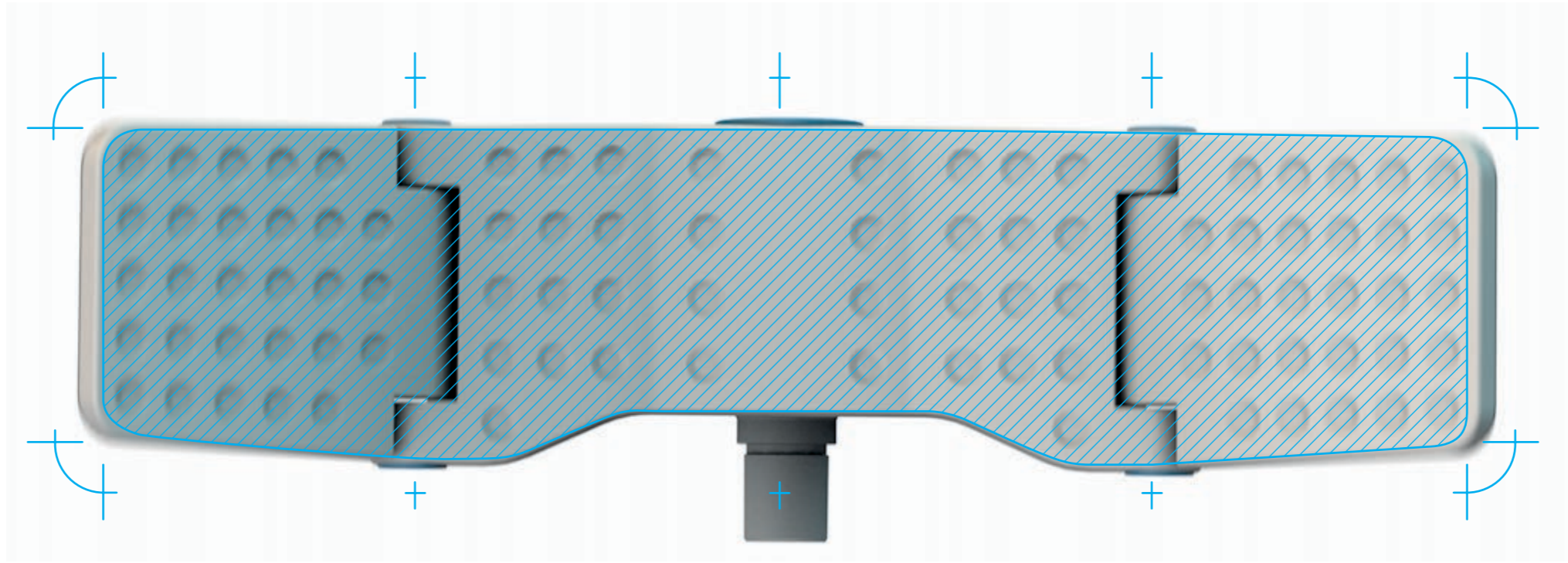
Courtesy of: BTL Aesthetics



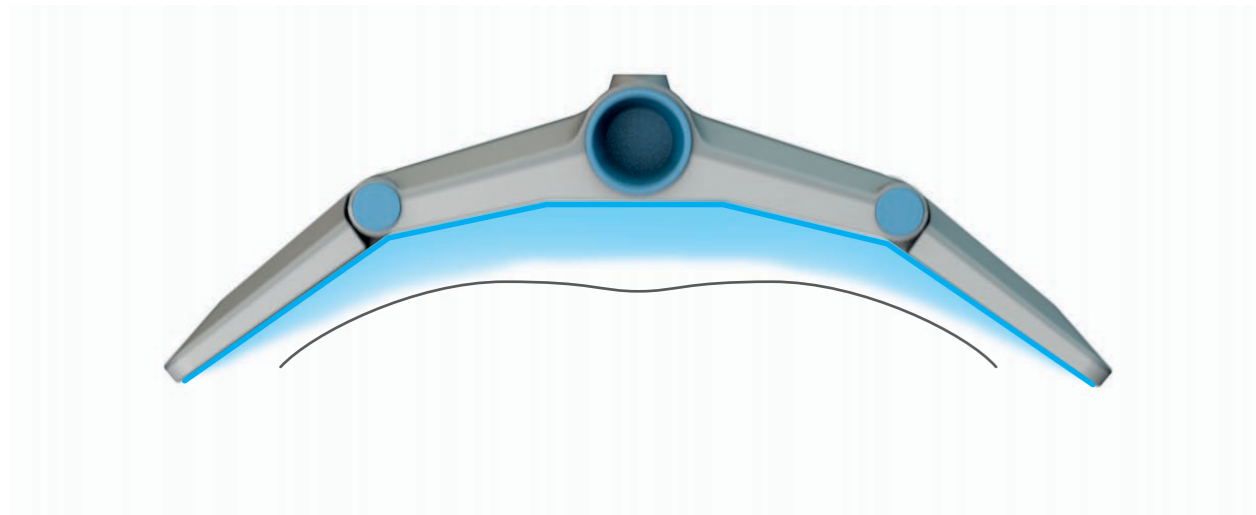
BEFORE

AFTER 4TX

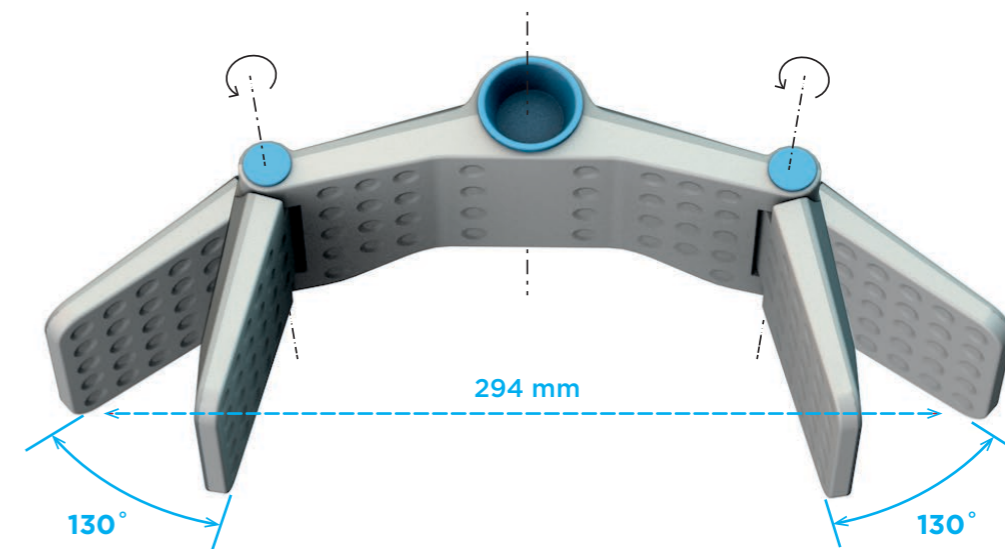
THE LARGEST SPOT SIZE IN THE INDUSTRY



THE ONLY **NON-CONTACT**
RF TECHNOLOGY

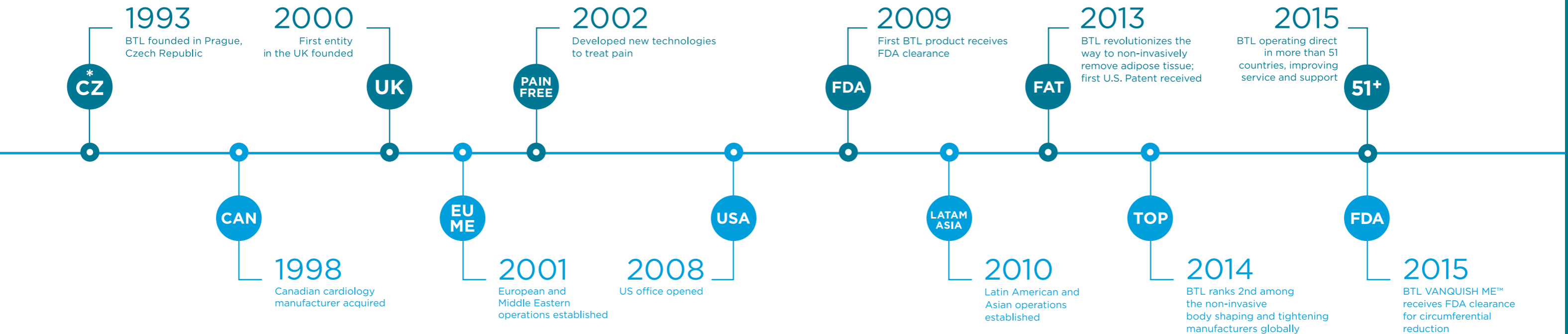


DESIGNED
FOR EVERY BODY



COMMITTED TO PERFECTION

- With state-of-the-art products across 3 medical areas: aesthetics, cardiology, and physiotherapy.
- With direct offices in more than 51 countries covering 4 continents.
- With over 800 employees, 120 R&D engineers and growing.



Our innovative approach and entrepreneurial spirit span over **20** years.

BTL. GROWING TO MEET YOUR NEEDS.

